

:

.(Easterbrook, 1969)

.(1981 ,)

.(2002 ,)

:

(500) (2000)

.(1) (32° 09' 20'' N, 32° 09' 40'' N)

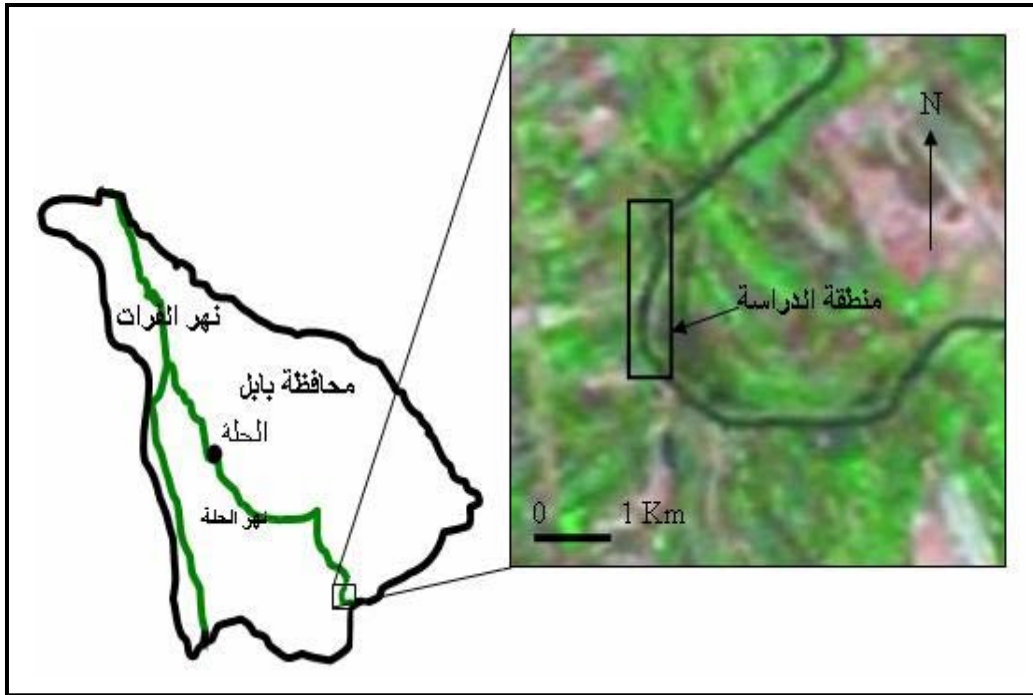
(44° 40' 18" E , 44 ° 50' 10" E)

:

:

(Buday, 1980)

(1985)



(1):

(Parsons,

(Lees and Falcon 1952)

.1957)

(1982)

(1)

:

(2002)

(USCS)

(MH)

(CH)

(CL)

(ML)

(2002) : (1)

99-40	
83-8	
37.4-21	
66.9-28.8	
46.2-11.5	
37.0-13.1	
1.7-0.265	

(2003)

1:100000 (2007/8/25) (2007/8/10) (15) 1:2000

(1)
(2008 ,)

(Simon and Thorne,

2008)

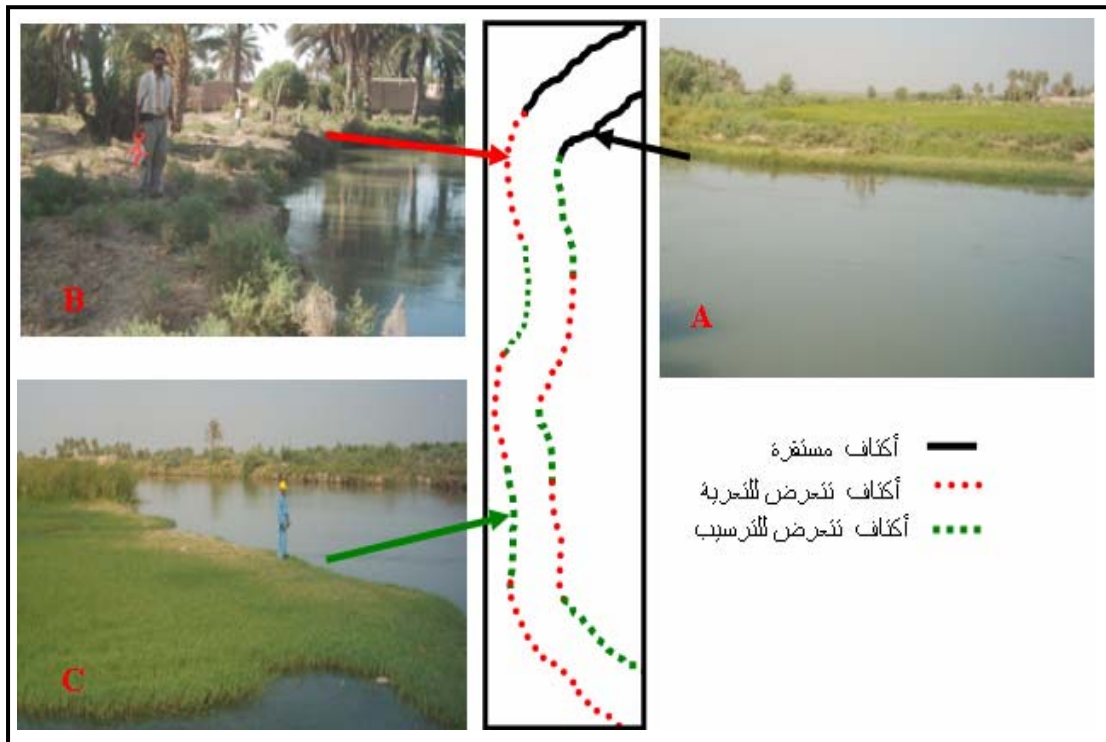
(1995 ,)

: (2)

(2)

()

(Simon and Thorne, 2008) ()



(B)

(A) .

: (2)

(C)

: (3)

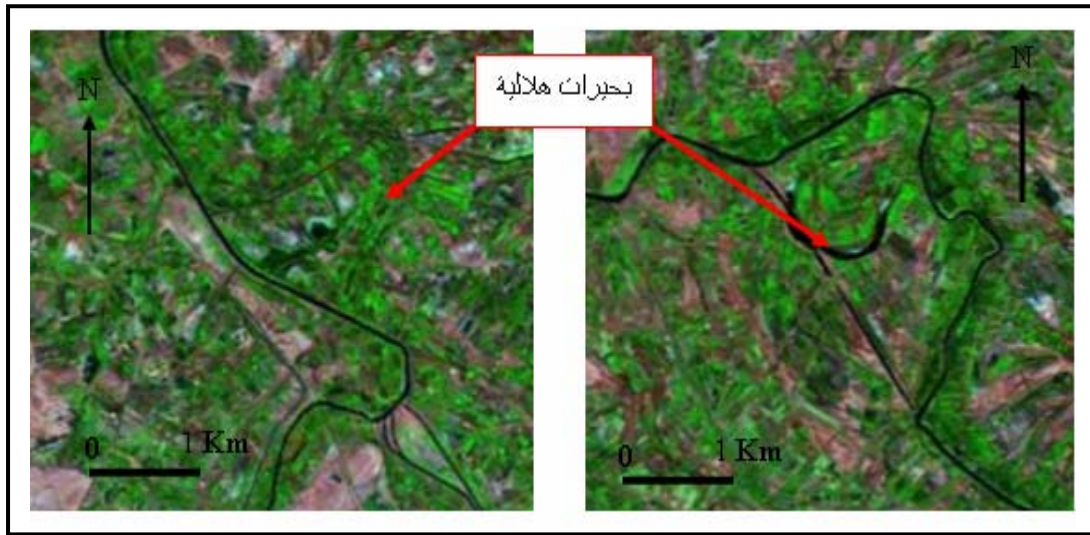
(1)

.(3)

(Chorley

et al., 1984)

.(Simon, 2002)



:(3)



:(4)

: (4)
(3) (0.45)

.(4)

: (5)

.(Rinaldi and Casagli, 1999)

.(5)



:(5)

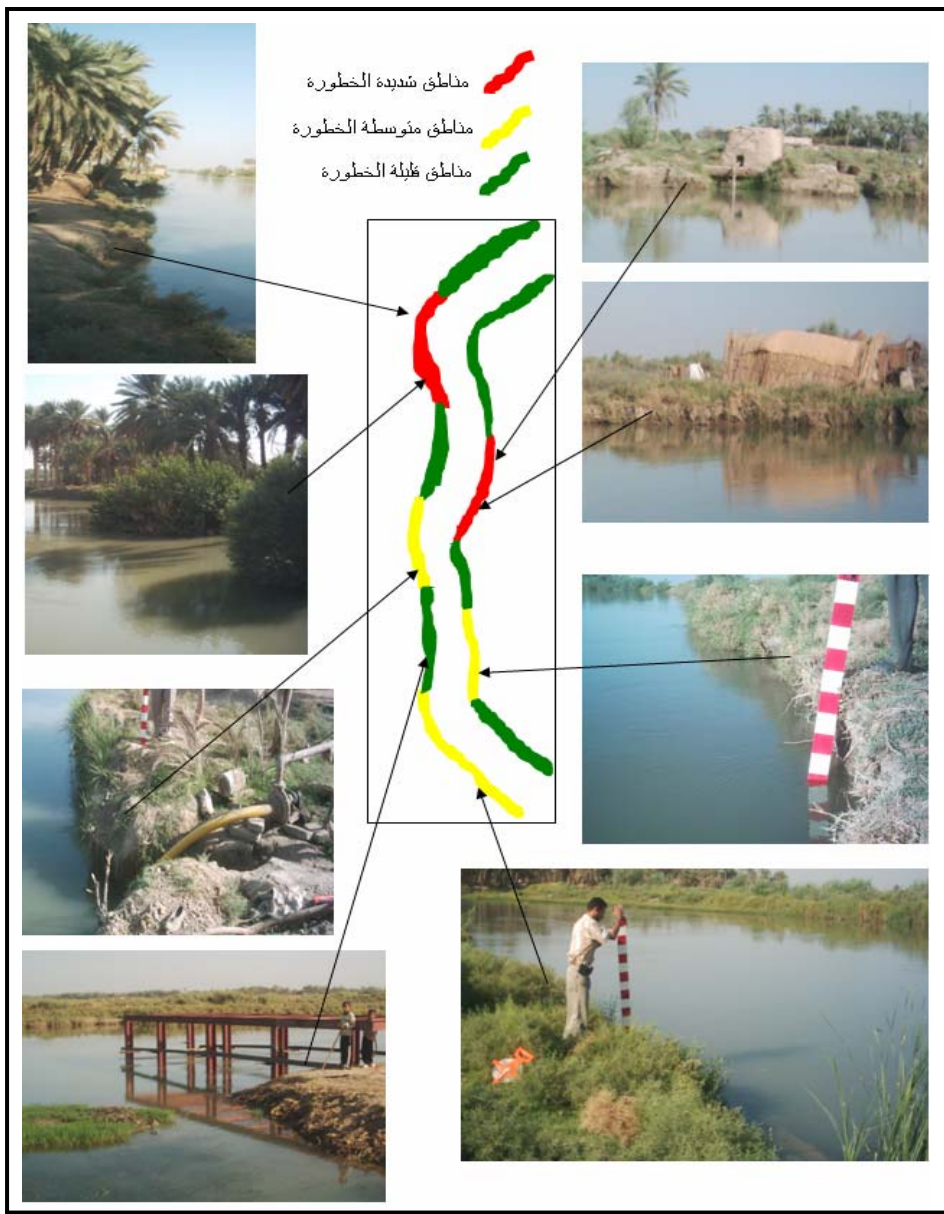
: (6)
(2)

.(1989)

: (7)
(6)

()
()
()

()

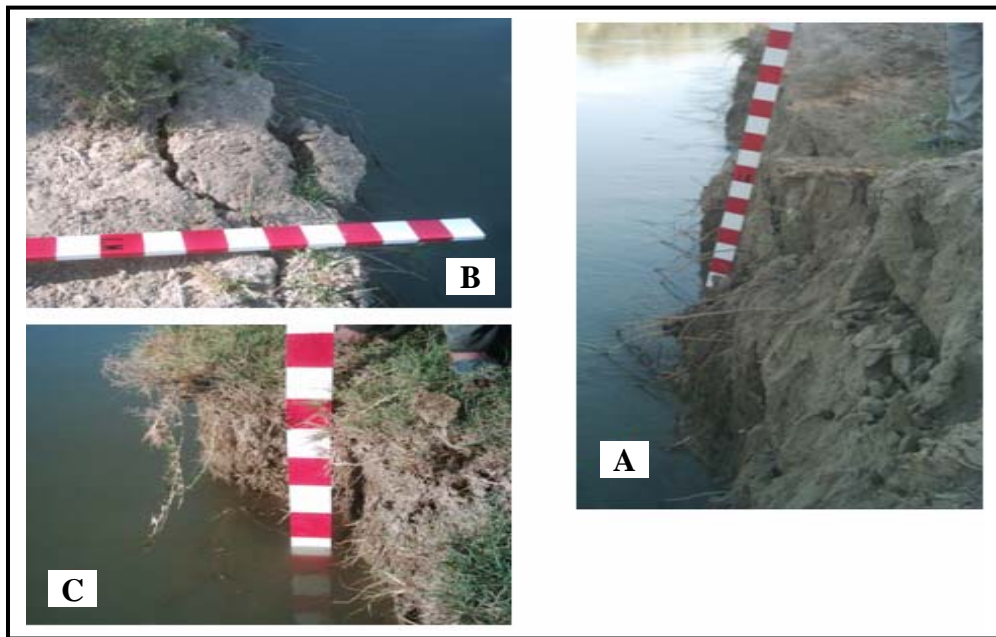


:(6)

: (8)
(Dapporto *et al.*, 2001)

(alcove-shape failure) :
(slap-shape failure) ,
(toppling-shape failure)

(7)
(Debris flow)



(B) (A) . : (7)

(C)

:

(Simon, 2000)

:

(1)

(2)

(3)

(4)

(5)

(6)

(7)

(8)

(9)

(10)

:

:

:

.() :2002 .1

.183 -

) :2008 , .2

.98-83 (3) (11) , .(

/) :2002 .3

.158 .(

) :1993 .4

.(

.() :1981	.5
	.258	
, .() :1989	.6
.() :1985	.7
	.235	
) :1982	.8
.182	.(
) :2003	.9
.181	.(

1. Buday, T., 1980: (The regional geology of Iraq: stratigraphy and paleogeography). Dar Al-Kutib Pub. House, Univ. of Mosul, Iraq. 444 P.
2. Chorley, R.J., Schumm, S.A. and Sugden, D.E., 1984: (Geomorphology). Methuen and Co. Ltd., London, New York.
3. Dapporto S., Rinald M., and Casagli N., 2001: (Failure mechanisms and pore water pressure conditions: analysis of a riverbank along the Arno River, Central Italy). Engineering Geology, Volume 61, Issue 4, PP. 221-242.
4. Easterbrook, D.J., 1969: (Principles of Geomorphology). McGraw-Hill book company, New York, .
5. Lees, G.M.& Falcon, NI., 1952: (The Geographical history of the Mesopotamian Plain). Geographical. Journal Cxv111.
6. Parsons, R., 1957 : (Groundwater Recourses of Iraq). Ministry of development, cover of Iraq.
7. Rinaldi, M. and Casagli, N., 1999: (Stability of stream banks formed in partially saturated soils and effects of negative pore water pressures: the Sieve River, Italy). Geomorphology, Volume 26, Issue 4, PP. 253-277.
8. Simon A., Curini A., Darby S. E. and Langendoen E. J., 2000: (Bank and near-bank processes in an incised channel). Geomorphology, Volume35, Issue3-4, PP.193-217.
9. Simon A., Darby S. E., 2002: (Effectiveness of grade-control structures in reducing erosion along incised river channels: the case of Hotophia Creek, Mississippi). Geomorphology, Volume 35, Issue3-4, PP. 193-217.